



## Potley Hill Primary School

### Supporting Pupils with Medical Needs Policy

#### Introduction

Section 100 of The Children and Families Act 2014 places a duty on the governing body of this school to make arrangements for supporting children at their premise with medical conditions. The Department of Education have produced statutory guidance 'Supporting Pupils with Medical Conditions' and we will have regard to this guidance when meeting this requirement.

We will endeavour to ensure that children with medical conditions are properly supported so that they have full access to education, including school trips and physical education. The aim is to ensure that all children with medical conditions, in terms of both their physical and mental health, are properly supported in school so that they can play a full and active role in school life, remain healthy and achieve their academic potential.

It is our policy to ensure that all medical information will be treated confidentially by the Headteacher and staff. All administration of medicines is arranged and managed in accordance with the Supporting Pupils with Medical Needs document. All staff have a duty of care to follow and co-operate with the requirements of this policy.

Where children have a disability, the requirement of the Equality Act 2010 will apply.

Where children have an identified special need, the SEN Code of Practice will also apply.

We recognise that medical conditions may impact social and emotional development as well as having educational implications.

#### Key Roles & Responsibilities

**Statutory Requirement: The governing body should ensure that the school's policy clearly identifies the roles and responsibilities of all those involved in the arrangements they make to support children at school with medical conditions.**

The Governing Body is responsible for:

- making arrangements to support pupils with medical conditions in school, including making sure that a policy for supporting pupils with medical conditions in school is developed and implemented.
- ensuring that a pupil with medical conditions is supported to enable the fullest participation possible in all aspects of school life.
- ensuring that sufficient staff have received suitable training and are competent before they take on responsibility to support children with medical conditions.
- ensuring that any members of school staff who provide support to pupils with medical conditions are able to access information and other teaching support materials as needed.

The Headteacher is responsible for:

- ensuring that their school's policy is developed and effectively implemented
- ensuring that all staff are aware of the policy for supporting pupils with medical conditions and understand their role in its implementation.
- ensuring that all staff who need to know are aware of the child's condition.
- ensuring that sufficient trained numbers of staff are available to implement the policy and deliver against all individual healthcare plans, including in contingency and emergency situations. This may involve recruiting a member of staff for this purpose.
- the development of individual healthcare plans.
- making sure that school staff are appropriately insured and are aware that they are insured to support pupils in this way.
- contacting the school nursing service in the case of any child who has a medical condition that may require support at school, but who has not yet been brought to the attention of the school nurse.
- risk assessing any school visits, holidays and other school activities outside of the normal timetable.
- monitoring individual healthcare plans.

Teachers and Support Staff are responsible for:

- providing support to pupils with medical conditions, including the administering of medicines, although they cannot be required to do so.
- taking into account the needs of pupils with medical conditions that they teach.
- ensuring they receive sufficient and suitable training and achieve the necessary level of competency before they take on responsibility to support children with medical conditions.
- knowing what to do and responding accordingly when they become aware that a pupil with a medical condition needs help.

The School Link Nurse is responsible for:

- notifying the school when a child has been identified as having a medical condition which will require support in school. Wherever possible, they should do this before the child starts at the school.
- supporting staff on implementing a child's individual healthcare plan and providing advice and liaison, for example on training.
- liaising with lead clinicians locally on appropriate support for the child and associated staff training needs.

## Local Arrangements

### Identifying children with health conditions

**Statutory Requirement: The Governing body will ensure that the policy sets out the procedures to be followed whenever a school is notified that a pupil has a medical condition.**

We will aim to identify children with medical needs on entry to the school by working in partnership with parents/ carers and following the process outlined in the document 'Process for identifying children with a health condition' produced by the Southern Health School Nursing Team in conjunction with the Children's Services Health and Safety Team. We will use the 'Health Questionnaire for Schools' to obtain the information required for each child's medical needs to ensure that we have appropriate arrangements in place prior to the child commencing at the school to support them accordingly.

Where a formal diagnosis is awaited or is unclear, we will plan to implement arrangements to support the child, based on the current evidence available for their condition. We will ensure that every effort is made to involve some formal medical evidence and consultation with the parents.

### **Individual health care plans**

**Statutory Requirement: The Governing body will ensure that the school's policy covers the role of individual healthcare plans, and who is responsible for their development in supporting children at school with medical conditions.**

We recognise that Individual Healthcare Plans are recommended in particular where conditions fluctuate or where there is a high risk that emergency intervention will be needed, and are likely to be helpful in the majority of other cases, especially where medical conditions are long term and complex. However, not all children will require one. The school, healthcare professional and parent will agree based on evidence when a healthcare plan would be inappropriate or disproportionate.

Where children require an individual healthcare plan it will be the responsibility of the Headteacher to work with parents and relevant healthcare professionals to write the plan.

A healthcare plan (and its review) may be initiated in consultation with the parent/carer, by a member of school staff or by a healthcare professional involved in providing care to the child. The Headteacher will work in partnership with the parents/carer, and a relevant healthcare professional e.g. school, specialist or children's community nurse, who can best advise on the particular needs of the child to draw up and/or review the plan. Where a child has a special educational need identified in a statement or Educational Health Care (EHC) plan, the individual healthcare plan will be linked to or become part of that statement or EHC plan.

We may also refer to the flowchart contained within the document 'Process for identifying children with a health condition' for identifying and agreeing the support a child needs and then developing the individual healthcare plan.

Where appropriate we will use the individual healthcare plan template produced by the DfE to record the plan, however with some specific needs, e.g. diabetes, we will use a more specific/NHS recommended format.

If a child is returning following a period of hospital education or alternative provision (including home tuition), that we will work with Hampshire County Council and education provider to ensure that the individual healthcare plan identifies the support the child will need to reintegrate effectively.

**Statutory Requirement: The governing body should ensure that all plans are reviewed at least annually or earlier if evidence is presented that the child's needs have changed. Plans should be developed with the child's best interests in mind and ensure that the school assesses and manages the risks to the child's education, health and social well-being and minimise disruption.**

All plans will be reviewed in the first 4 weeks of the Autumn term in the first instance. A review may also be prompted by a change in circumstance, such as an EHC plan review or a new child starting at the school.

**Statutory Requirement: When deciding what information should be recorded on individual healthcare plans, the governing body should consider the following:**

- the medical condition, its triggers, signs, symptoms and treatments;
- the pupil's resulting needs, including medication (dose, side-effects and storage) and other treatments, time, facilities, equipment, testing, access to food and drink where this is used to manage their condition, dietary requirements and environmental issues e.g. crowded corridors, travel time between lessons;
- specific support for the pupil's educational, social and emotional needs – for example, how absences will be managed, requirements for extra time to complete exams, use of rest periods or additional support in catching up with lessons, counselling sessions;
- the level of support needed, (some children will be able to take responsibility for their own health needs), including in emergencies. If a child is self-managing their medication, this should be clearly stated with appropriate arrangements for monitoring;
- who will provide this support, their training needs, expectations of their role and confirmation of proficiency to provide support for the child's medical condition from a healthcare professional; and cover arrangements for when they are unavailable;
- who in the school needs to be aware of the child's condition and the support required;
- arrangements for written permission from parents and the headteacher for medication to be administered by a member of staff, or self-administered by the pupil during school hours;
- separate arrangements or procedures required for school trips or other school activities outside of the normal school timetable that will ensure the child can participate, e.g. risk assessments;
- where confidentiality issues are raised by the parent/child, the designated individuals to be entrusted with information about the child's condition; and
- what to do in an emergency, including whom to contact, and contingency arrangements. Some children may have an emergency healthcare plan prepared by their lead clinician that could be used to inform development of their individual healthcare plan.

### **Staff training**

**Statutory Requirement: The Governing Body should ensure that this policy clearly sets out how staff will be supported in carrying out their role to support children with medical conditions, and how this will be reviewed. It should specify how training needs will be assessed and by whom training will be commissioned and provided.**

**The school policy should be clear that any member of school staff providing support to a child with medical needs should have received suitable training.**

**Staff must not administer prescription medicines or undertake any health care procedures without the appropriate training (updated to reflect any individual healthcare plans)**

All new staff will complete basic Schools First Aid training as part of their induction. All new staff will be advised of the medical needs of pupils in their class and receive specific training to meet these needs where necessary. The records of any certified training will be added to individual staff member's personnel files.

Managing medical conditions training will be completed by specific staff every two years, (with certificates added to personnel files), and any relevant messages/training will be shared with wider school staff.

Where required we will work with the relevant healthcare professionals to identify and agree the type and level of training required and identify where the training can be obtained from. This will include ensuring that the training is sufficient to ensure staff are competent and confident in their ability to support children with medical conditions. The training will include preventative and emergency measures so that staff can recognise and act quickly when a problem occurs and therefore allow them to fulfil the requirements set out in the individual healthcare plan.

Any training undertaken will form part of the overall training plan for the school and refresher awareness training will be scheduled at appropriate intervals agreed with the relevant healthcare professional delivering the training.

### **The child's role**

**Statutory Requirement: The Governing body will ensure that the school's policy covers arrangements for children who are competent to manage their own health needs and medicines.**

Where possible and in discussion with parents, children that are competent will be encouraged to take responsibility for managing their own medicines and procedures. This will be recorded in their individual healthcare plan. The healthcare plan will reference what will happen should a child who self-administers refuse to take their medication (this will normally be informing the parent/carer at the earliest opportunity).

Where possible we will endeavour to ensure that children can carry their own medicines and relevant devices or have easy access to allow for quick self-medication. We will agree with relevant healthcare professionals/parent the appropriate level of supervision required and document this in their healthcare plan.

### **Managing medicines on School Premises**

**Statutory Requirement: The Governing Body will ensure that the school's policy is clear about the procedures to be followed for managing medicines.**

The administration of medicines is the overall responsibility of the parents/carers. Where clinically possible we will encourage parents to ask for medicines to be prescribed in dose frequencies which enable them to be taken outside of school hours. However, the Headteacher is responsible for ensuring children are supported with their medical needs whilst on site, therefore this may include managing medicines where it would be detrimental to a child's health or school attendance not to do so.

We will not give prescription medicines to a child under 16 without their parent's/carers written consent (a 'parental agreement for setting to administer medicines' form will be used to record this), except in exceptional circumstances where the medicine has been prescribed to the child without the knowledge of the parents. In such cases, we will make every effort to encourage the child or young person to involve their parents while respecting their right to confidentiality.

A documented tracking system to record all medicines received in and out of the premises will be put in place. The tracking system used is The Children's Services Medication Tracking Form.

The name of the child, dose, expiry and shelf-life dates will be checked before medicines are administered.

On occasions where a child refuses to take their medication the parents will be informed at the earliest available opportunity.

We will only accept prescribed medicines that are in date, labelled, provided in the original container as dispensed by the pharmacist and include instructions for administration, their dosage and storage. Insulin is the exception, which must still be in date but will generally be available to schools inside an insulin pen or a pump, rather than its original container.

Controlled drugs will be securely stored in a non-portable container which only named staff will have access to. We will ensure that the drugs are easily accessible in an emergency situation. A record will be kept of any doses used and the amount of the controlled drug held in school. There may be instances where it is deemed appropriate for a child to administer their own controlled medication. This would normally be at the advice of a medical practitioner. Where an individual child is competent to do so and following a risk assessment, we may allow them to have prescribed controlled drugs on them with monitoring arrangements in place.

We will only administer non-prescribed medicines on request from the parent if they are in clearly identifiable packaging and only on a short-term basis. (Where the school have concerns they will seek further guidance from their link School Nurse).

We will only administer aspirin or medicine containing Ibuprofen to any child under 16 years old on the instruction of the parent and if supplied by them.

All other pain relief medicine will not be administered without first checking maximum dosages and when previously taken. We will always inform parents.

Any homeopathic remedies to be administered will require a letter of consent from the child's doctor and will be administered at the discretion of the Head teacher.

Emergency medicines will be stored in a safe location but not locked away to ensure they are easily accessible in the case of an emergency.

Types of emergency medicines include:

- Injections of adrenaline for acute allergic reactions
- Inhalers for asthmatics
- Injections of Glucagon for diabetic hypoglycaemia

Other emergency medication i.e. Rectal diazepam or Buccal Midazolam for major seizures will be stored in accordance with the normal prescribed medicines procedures (see storage section).

## **Storage**

All medication other than emergency medication will be stored safely in a locked cabinet, where the hinges cannot be easily tampered with and cannot be easily removed from the premise.

Where medicines need to be refrigerated, they will be stored in the office refrigerator in a clearly labelled container. There must be restricted access to a refrigerator holding medicines.

Children will be made aware of where their medicines are at all times and be able to access them immediately where appropriate. Where relevant they should know who holds the key to the storage facility.

Medicines such as asthma inhalers, blood glucose testing meters and adrenaline pens will always be readily available to children and not locked away. We will also ensure that they are readily available when outside of the school premises or on school trips.

Storage of medication whilst off site will be maintained at steady temperature and secure. There will be appropriately trained staff present to administer day to day and emergency medication and copies of individual health care plans will be taken off site to ensure appropriate procedures are followed.

## **Disposal**

It is the responsibility of the parents/carers to dispose of their child's medicines. It is our policy to return any medicines that are no longer required including those where the date has expired to the parents/carers. Parents/carers will be informed of this when the initial agreements are made to administer medicines. Medication returned to parent/ carers will be documented on the tracking medication form.

Sharps boxes will be in place for the disposal of needles. Collection and disposal of these will be arranged to take place annually.

## **Medical Accommodation**

The medical room will be used for all medical administration/treatment purposes and/or the child's classroom if this is where their medication e.g. asthma reliever inhaler, is stored. The medical room will be made available when required.

## **Record keeping**

**Statutory Requirement: The governing body should ensure that written records are kept of all medicines administered to children.**

A record of what has been administered including how much, when and by whom, will be recorded on a 'record of prescribed medicines' form. The form will be kept on file. Any possible side effects of the medication will also be noted and reported to the parent/carers.

## **Emergency Procedures**

**Statutory Requirement: The Governing body will ensure that the school's policy sets out what should happen in an emergency situation.**

See Template F below for a school recording format.

Where a child has an individual healthcare plan, this will clearly define what constitutes an emergency and provide a process to follow. All relevant staff will be made aware of the emergency symptoms and procedures. We will ensure other children in the school know what to do in the event of an emergency ie. informing a teacher immediately if they are concerned about the health of another child.

Where a child is required to be taken to hospital, a member of staff will stay with the child until their parents arrives, this includes accompanying them to hospital by ambulance if necessary (taking any relevant medical information, care plans etc that the school holds).

### **Day trips/off site activities**

**Statutory Requirement: The Governing body should ensure that their arrangements are clear and unambiguous about the need to support actively pupils with medical conditions to participate in school trips and visits, or in sporting activities, and not prevent them from doing so.**

We will ensure that teachers are aware of how a child's medical condition will impact on their participation in any off-site activity or day trip, but we will ensure that there is enough flexibility for all children to participate according to their own abilities within reasonable adjustments.

We will consider what reasonable adjustments we might make to enable children with medical needs to participate fully and safely on visits. We will carry out a risk assessment so that planning arrangements take account of any steps needed to ensure that pupils with medical conditions are included. We will consult with parents and pupils and advice from the relevant healthcare professional to ensure that pupils can participate safely.

### **Other issues**

Defibrillators - A defibrillator is a machine used to give an electric shock to restart a patient's heart when they are in cardiac arrest. Modern defibrillators are easy to use, inexpensive and safe. Staff members appointed as first aiders should already be trained in the use of CPR and may wish to promote these techniques more widely in the school, amongst both teachers and pupils alike. Potley Hill has a defibrillator on site, this is located in the inner foyer by the hall doors and the 'My Defibrillators' accompanying guidance was followed on installation and is being used for ongoing maintenance.

Salbutamol Asthma inhalers for emergency use - schools are now able to hold asthma inhalers for emergency use. This is entirely voluntary, and the Department of Health has produced a protocol which will provide further information. This is attached to the policy in the appendices. Governors have agreed that the school WILL hold 2 asthma inhalers for emergency use.

Epipens - schools are now also able to hold epipens for emergency use. School holds 2 epipens due to the requirements of a child currently on roll.

### **Unacceptable practice**

**Statutory Requirement: The governing body will ensure that the school's policy is explicit about what practice is not acceptable.**

Staff are expected to use their discretion and judge each child's individual healthcare plan on its merits, it is not generally acceptable practice to:



- prevent children from easily accessing their inhalers and medication and administering their medication when and where necessary;
- assume that every child with the same condition requires the same treatment;
- ignore the views of the child or their parents; or ignore medical evidence or opinion (although this may be challenged);
- send children with medical conditions home frequently or prevent them from staying for normal school activities, including lunch, unless this is specified in their individual healthcare plans;
- if the child becomes ill, send them to the school office or medical room unaccompanied or with someone unsuitable;
- penalise children for their attendance record if their absences are related to their medical condition, eg. hospital appointments;
- prevent pupils from drinking, eating or taking toilet or other breaks whenever they need to in order to manage their medical condition effectively;
- require parents, or otherwise make them feel obliged, to attend school to administer medication or provide medical support to their child, including with toileting issues. No parent should have to give up working because the school is failing to support their child's medical needs; or
- prevent children from participating, or create unnecessary barriers to children participating in any aspect of school life, including school trips e.g. by requiring parents to accompany the child.

## **Liability and Indemnity**

**Statutory Requirement: The governing body will ensure that the appropriate level of insurance is in place and appropriately reflects the level of risk.**

Staff at the school are indemnified under the County Council self-insurance arrangements.

The County Council's is self-insured and have extended this self-insurance to indemnify school staff who have agreed to administer medication or undertake a medical procedure to children. To meet the requirements of the indemnification, we will ensure that staff at the school have parents' permission for administering medicines and members of staff will have had training on the administration of the medication or medical procedure.

## **Complaints**

**Statutory Requirement: The governing body will ensure that the school's policy sets out how complaints may be made and will be handled concerning the support provided to pupils with medical conditions.**

Should parents or children be dissatisfied with the support provided they can discuss their concerns directly with the Headteacher. If for whatever reason this does not resolve the issue, they may make a formal complaint via the school's complaints procedure.

**Date Reviewed: March 2024**

**Date of next Review: March 2025**

## List of Templates and Appendices

Template A: individual healthcare plan	11
Template B: parental agreement for setting to administer medicine	13
Template C: record of medicine administered to an individual child	14
Template D: record of medicine administered to all children	16
Template E: staff training record – administration of medicines	17
Template F: contacting emergency services	18
Template G: model letter inviting parents to contribute to individual healthcare plan	19
Appendix A: Process for identifying children with medical conditions	20
Appendix B: Medical Questionnaire	21
Appendix C: Blank Risk Assessment	22
Appendix D: Medication Tracking Form	33
Appendix E: Consent Form for use of Emergency Inhaler	34
Appendix F: Specimen Letter after use of Emergency Inhaler	35

## Template A: individual healthcare plan

Name of school/setting	
Child's name	
Group/class/form	
Date of birth	
Child's address	
Medical diagnosis or condition	
Date	
Review date	

### Family Contact Information

Name	
Phone no. (work)	
(home)	
(mobile)	
Name	
Relationship to child	
Phone no. (work)	
(home)	
(mobile)	

### Clinic/Hospital Contact

Name	
Phone no.	

### G.P.

Name	
Phone no.	

Who is responsible for providing support in school

--

Describe medical needs and give details of child's symptoms, triggers, signs, treatments, facilities, equipment or devices, environmental issues etc

Name of medication, dose, method of administration, when to be taken, side effects, contra-indications, administered by/self-administered with/without supervision

Daily care requirements

Specific support for the pupil's educational, social and emotional needs

Arrangements for school visits/trips etc

Other information

Describe what constitutes an emergency, and the action to take if this occurs

Who is responsible in an emergency (*state if different for off-site activities*)

Plan developed with

Staff training needed/undertaken – who, what, when

Form copied to

## Template B: parental agreement for setting to administer medicine

The school/setting will not give your child medicine unless you complete and sign this form, and the school or setting has a policy that the staff can administer medicine.

Dear Parent/Carer,

We require your written permission to administer any prescribed medicines in school. **Please do not decant medicines into other containers. We can only accept medicines in their original labelled container as dispensed by the pharmacy, otherwise we might miss important instructions and warnings.**

Please hand the medicine over to a member of the **office staff** personally, who will ensure that it is stored appropriately and all instructions regarding the medicine are carefully followed. Do not leave any medicine in your child's book bag (including seemingly 'harmless' medicines like throat lozenges, eye drops/nasal sprays for hayfever relief, eczema creams, etc) as another child could then have access to them.

If your child refuses to take their medicine, we will make every effort to inform you on the same day. If for some reason your child does not take their medicine at the exact time of day requested, we will let you know so that the timing of their next dose can be adjusted accordingly.

For any medicines required on a long-term basis, ask the pharmacy if they can supply a separate labelled supply just for the school (they might need another prescription to do this). We can then keep a separate supply at school without the need for you to send medicines in each day.

### Parent/carer to complete:

Child's name	
Child's class	
Medical condition being treated	
Name of medicine	
Strength of medicine	
Form (e.g. syrup/tablets)	
Dosage (amount and timing)	
Does your child need help to take this medicine? Please tick as appropriate:	
<input type="checkbox"/> I need someone to administer this medicine to my child	
<input type="checkbox"/> My child can take this medicine themselves, but needs the following supervision from staff	
Are there any side effects that the school/setting needs to look out for? Yes/No	
If Yes, please give details:	
Name of parent/carer	
Relationship to pupil	
Contact telephone number	
Signature of parent/carer	

# Template C: record of medicine administered to an individual child

## Medicines Administration Record (School office use only)

First name	Surname	D.O.B	Class

Medicine name	Strength	Form (e.g. syrup/tablets)	Amount needed	At which time(s)

Date	Quantity received	Quantity returned	Expiry date	Signature*

Day	Month:								
	Year:								
	Dose 1			Dose 2			Dose 3		
	Time	Amount	Signature	Time	Amount	Signature	Time	Amount	Signature
1									
2									
3									
4									
5									
6									
7									
8									
9									
10									

11								
12								
13								
14								
15								
16								
17								
18								
19								
20								
21								
22								
23								
24								
25								
26								
27								
28								
29								
30								
31								

\* Medicines received/returned. Staff signature with optional co-signature from parent/carer.

If the pupil refuses their medication, please inform their parent/carer and record 'refused' in the amount column. If a dose is missed/given at the wrong time, please inform parent/carer and record 'missed' or exact time it was given as appropriate.





## Template E: staff training record – administration of medicines

Name of school/setting

Name

Type of training received

Date of training completed

Training provided by

Profession and title


I confirm that [name of member of staff] has received the training detailed above and is competent to carry out any necessary treatment. I recommend that the training is updated [name of member of staff].

Trainer's signature \_\_\_\_\_

Date \_\_\_\_\_

**I confirm that I have received the training detailed above.**

Staff signature \_\_\_\_\_

Date \_\_\_\_\_

Suggested review date \_\_\_\_\_

## Template F: contacting emergency services

**Request an ambulance - dial 999, ask for an ambulance and be ready with the information below.**

**Speak clearly and slowly and be ready to repeat information if asked.**

1. your telephone number	01252 876106
2. your name	
3. your location as follows [insert school/setting address]	Potley Hill Primary School Potley Hill Road Yateley Hants
4. state what the postcode is – please note that postcodes for satellite navigation systems may differ from the postal code	GU46 6AG
5. provide the exact location of the patient within the school setting	
6. provide the name of the child and a brief description of their symptoms	
7. inform Ambulance Control of the best entrance to use and state that the crew will be met and taken to the patient	
8. Your signature	

**Put a completed copy of this form by the phone**

## Template G: model letter inviting parents to contribute to individual healthcare plan

Dear Parent

### **DEVELOPING AN INDIVIDUAL HEALTHCARE PLAN FOR YOUR CHILD**

Thank you for informing us of your child's medical condition. I enclose a copy of the school's policy for supporting pupils at school with medical conditions for your information.

A central requirement of the policy is for an individual healthcare plan to be prepared, setting out what support each pupil needs and how this will be provided. Individual healthcare plans are developed in partnership between the school, parents, pupils, and the relevant healthcare professional who can advise on your child's case. The aim is to ensure that we know how to support your child effectively and to provide clarity about what needs to be done, when and by whom. Although individual healthcare plans are likely to be helpful in the majority of cases, it is possible that not all children will require one. We will need to make judgements about how your child's medical condition impacts on their ability to participate fully in school life, and the level of detail within plans will depend on the complexity of their condition and the degree of support needed.

A meeting to start the process of developing your child's individual health care plan has been scheduled for xx/xx/xx. I hope that this is convenient for you and would be grateful if you could confirm whether you are able to attend. The meeting will involve [the following people]. Please let us know if you would like us to invite another medical practitioner, healthcare professional or specialist and provide any other evidence you would like us to consider at the meeting as soon as possible.

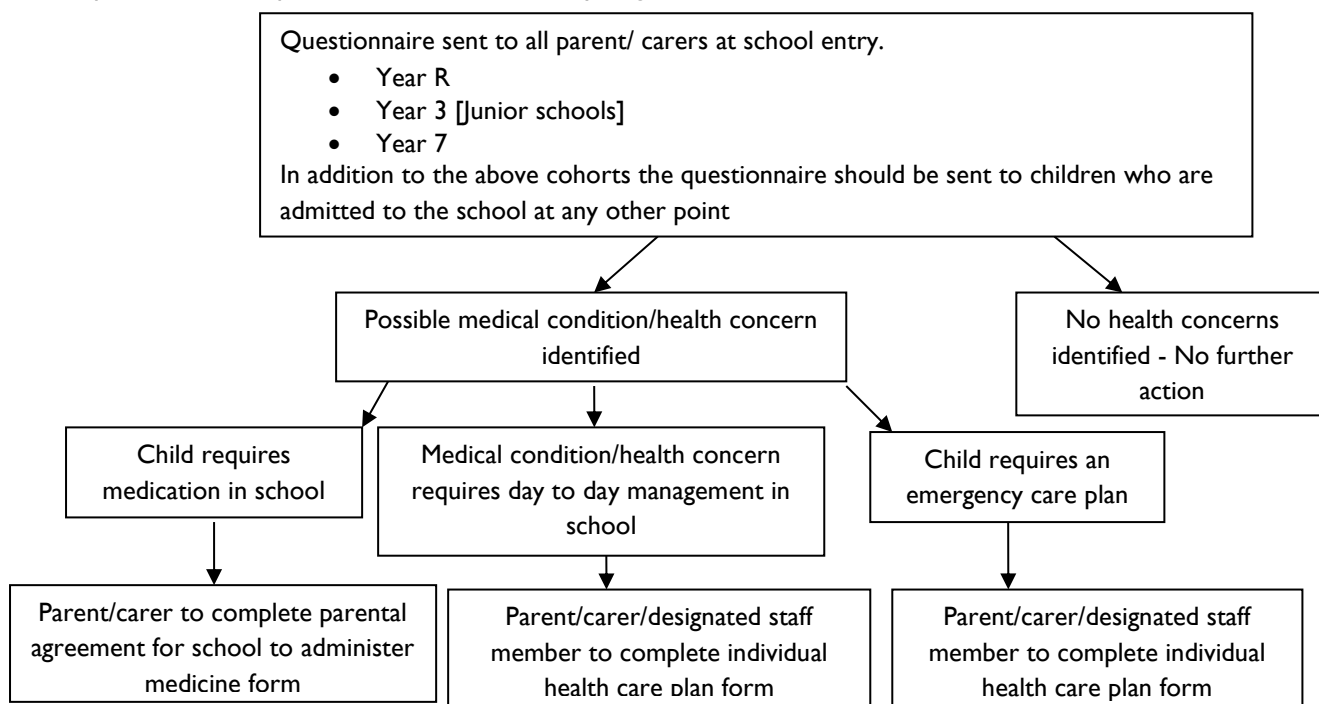
If you are unable to attend, it would be helpful if you could complete the attached individual healthcare plan template and return it, together with any relevant evidence, for consideration at the meeting. I [or another member of staff involved in plan development or pupil support] would be happy for you contact me [them] by email or to speak by phone if this would be helpful.

Yours sincerely

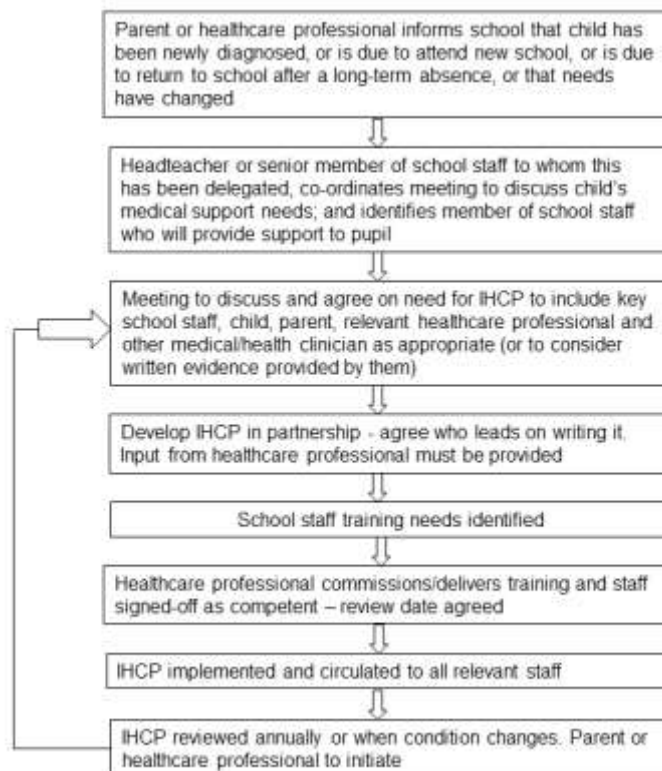
## APPENDIX A

### Suggested process for identifying children or young people with a medical condition that may require support in school

Not all children with a health condition will require a health care plan in school however the form will help schools to ascertain which children require support. In addition to this schools may be informed at any other point by a parent or health professional if a child is newly diagnosed with a health condition.



Please see sample flowchart below from the Supporting pupils with medical conditions guidance





Dream Big, Aim High  
& Make a Difference

## Potley Hill Primary School Medical Questionnaire

It is important that all children with medical conditions are supported in school to make sure that they are able to access their education. Some children with medical conditions may need care or medication to manage their health condition and to keep them well during the school day.

Please complete the questionnaire below so that we are able to assess your child's health needs and make arrangements to support them if necessary. In order to ensure that any medical needs are appropriately met in school we may need to discuss your child's health with the School Nursing Service or another health professional involved in your child's care.

Name of adult with parental responsibility: \_\_\_\_\_

Child's name: \_\_\_\_\_ Class: \_\_\_\_\_

Does your child have a medical condition/ health concern?

YES  NO

If YES please give details

Does this medical condition/health concern need to be managed during the school day?

YES  NO

If YES please give details

Does your child take medication during the school day?

YES  NO

If YES please give details

Does your child have a health care plan that should be followed in a medical emergency?

YES  NO

If YES please give details and provide school with a copy of the healthcare plan

The above information is, to the best of my knowledge, accurate at the time of writing and I give consent to the school to discuss this information with the School Nursing Service or other health professionals who are involved in my child's care.

**I accept it is my responsibility to notify the school immediately if there is any change to the medical information I have provided about my child.**

Signed: \_\_\_\_\_

Date: \_\_\_\_\_

## Appendix C

Activity	Administration of Medicines	Date of Assessment	
Location		Date of Review	
Name of Risk Assessor		Risk assessment subject to.	Management of Health and Safety at Work Regulations

This risk assessment template can be used for specialist areas where a model template does not exist. .

**Instructions for Use:** This blank risk assessment should be used for any area where there is not already a template risk assessment in place. You will need to ensure that you have identified the common hazards and recognised those people who could be at risk and whether they have any individual requirements. Consider all of the standard controls i.e. those things you need to do to reduce the risk and then confirm all of the standard controls are in place. Check if there is anything further that you may need to do. If all of these components are completed the level of risk for these hazards will have been reduced to the lowest acceptable level. An action plan should be completed if further mitigation is required following the assessment.

**Original risk assessments must be kept for a period of 7 years. On completion a hard copy should be printed off and placed in your local/site health and safety folder.**

**This document should be filed under Hantsfile under Health and Safety Risk Assessment**

## **Administration of Medicines Risk Assessment Guidance**

The Supporting Pupils with Medical Needs document produced by the DfE and published in September 2014 for implementing into schools, includes the provision of administration of medicines to pupils.

The school Governors must ensure that a local policy on supporting pupils with medical needs is produced and implemented in the school.

This risk assessment should be completed as part of the process to assist in identifying the specific hazards and control measure that need to be put in place to ensure medication is administered, managed and stored safely and effectively in schools by competent staff.

The hazards and controls measures have been entered into the form however, schools must ensure that they complete the second box titled “Who Might be Harmed and How” by identifying who at the school may be harmed by the hazard, eg. children with medical needs and in same box you should be considering how they might be harmed, ie. what the risk is from the identified hazard and enter this information into the same box.

You must then review the control measures that have already been entered in to the third box and enter into the box titled “Do you need to do anything else to manage the risk” any further measures that need to be implemented locally to ensure that the control measures are met and therefore the risk reduced to a manageable level. If anything else is identified locally to manage the risk the following boxes “Action by Whom”, “Action by When” and “Done” must also be completed. The information should then be transferred onto the action plan at the end of the risk assessment form and used as a live document until all actions have been completed.

An example has been entered in it’s entirety to demonstrate how to completed the form correctly. If this process is followed for all the identified hazards correctly the level of risk should be reduced to lowest possible point.

Once the risk assessment is complete and to ensure that is effective it should be shared with all relevant staff and reviewed periodically.



What are the hazards?	Who might be harmed and how?	What are you already doing?	Do you need to do anything else to manage this risk?	Action by whom?	Action by when?	Done
<p><b><u>Policy/Procedures</u></b></p> <p>Lack of policy/procedures</p> <p>Lack of clarity and staff awareness of policy and procedures</p> <p>Failure to follow policy/procedures</p>		<p>Local administration of medicines policy documented for premises</p> <p>Administration of medicines policy provided to staff at induction and periodically thereafter</p> <p>Investigation procedure in place in the event of failure e.g. refresher training, disciplinary procedures or review of policy</p>				

What are the hazards?	Who might be harmed and how?	What are you already doing?	Do you need to do anything else to manage this risk?	Action by whom?	Action by when?	Done
<p><b>Training</b></p> <p>Lack of awareness training to safely administer medicines e.g. asthmas, epi-pen etc.</p> <p>Lack of awareness training in control and storage of medication</p> <p>Lack of specific awareness training to meet individual needs of children on the premises</p>		<p>Periodic awareness training provided for medical conditions such as asthma or epi-pen etc. by a competent person e.g. school nurse or other medical professional</p> <p>Induction awareness training on local storage procedures and periodic refresher information provided (annually) to relevant staff e.g. policy/procedures</p> <p>Questionnaire (provided by School Nursing Team) to be completed by parents/guardian for pupils on admission to school to ensure medical needs are identified</p> <p>Periodic training provided for specific medical conditions by competent person e.g. school nurse or other medical professional</p>				

What are the hazards?	Who might be harmed and how?	What are you already doing?	Do you need to do anything else to manage this risk?	Action by whom?	Action by when?	Done
<p><b><u>Administration</u></b></p> <p>Incorrect dosage given</p> <p>Incorrect pupil given medication</p> <p>Out of date medication administered</p>		<p>Medication to be provided in the original container/labelled with the name of the appropriate pupil and dose required</p> <p>Local procedure for checking name and dosage on medication prior to administration</p> <p>Part of local procedure should be to review expiry date prior to administering medication</p>				
<p><b><u>Controlled Drugs</u></b></p> <p>Any specific procedures</p>		<p>Only trained staff to administer medication</p>				

What are the hazards?	Who might be harmed and how?	What are you already doing?	Do you need to do anything else to manage this risk?	Action by whom?	Action by when?	Done
<p><b>Storage</b></p> <p>No locked cabinet or room in use/available prescribed medicines and controlled drugs not locked away e.g. stored in pigeonholes</p> <p>No secure refrigerator available/in use</p> <p>Medicines not in original containers or clearly labelled</p> <p>Emergency medicines locked away</p>		<p>Locked cabinet (not easily removable) or lockable room for use of storing all medication</p> <p>Ideally a dedicated refrigerator should be used which is in a secure location. If a normal refrigerator is used medicine must be stored in a separate sealed container and clearly labelled</p> <p>Medicines to be provided in the original container labelled with the name of the appropriate pupil</p> <p>All emergency medicines (asthma inhalers, epi-pens etc.) readily available and not locked away.</p>				

What are the hazards?	Who might be harmed and how?	What are you already doing?	Do you need to do anything else to manage this risk?	Action by whom?	Action by when?	Done
<p><b>Consent</b></p> <p>Lack of parents consent</p> <p>Inappropriate person providing consent</p> <p>Limited information on consent form (leading to lack of clarity)</p> <p>Formal consent forms not used</p>		<p>Parental consent forms to be completed using standard template, provided by department and fully completed by a parent or guardian of child only, providing all relevant information requested</p>				

What are the hazards?	Who might be harmed and how?	What are you already doing?	Do you need to do anything else to manage this risk?	Action by whom?	Action by when?	Done
<p><b>Health Care Plans</b></p> <p>School unaware that child has health issues requiring monitoring in school</p> <p>No health care plans in place</p> <p>Lack of involvement of family and health care professionals</p> <p>Lack of awareness of health care plan by relevant staff</p>		<p>Process in place for identifying a child who has health issues that require monitoring in school i.e. identifying Children with Health Conditions questionnaire</p> <p>A health care plan must be devised when required in conjunction with appropriate medical practitioner, parents, guardian and Headteacher using standard forms provided by department</p> <p>Health care plans to be provided to all relevant staff</p>				

What are the hazards?	Who might be harmed and how?	What are you already doing?	Do you need to do anything else to manage this risk?	Action by whom?	Action by when?	Done
<p><b><u>Record Keeping and Communication</u></b></p> <p>No record of medicines being administered</p> <p>No tracking system for medication received in and out of premise</p>		<p>Recording forms to be used when medication is administered, which includes information such as parent consent forms, record of prescribed medicines given to a child, staff training awareness record forms</p> <p>Tracking system to be implemented to log when medication is received in and out of premises. This is to be used for every medication administered</p> <p>Tracking system should include the expiry date for medication to enable periodical checks to be carried out, unless another system has been implemented</p> <p>Procedure in place to check with parents when expiry dates are exceeded</p>				

What are the hazards?	Who might be harmed and how?	What are you already doing?	Do you need to do anything else to manage this risk?	Action by whom?	Action by when?	Done
		Reminder system in place for informing parents of their responsibility of ensuring medication is not expired e.g. newsletter				
<p><b><u>Disposal of Medication</u></b></p> <p>Medication not disposed of responsibly</p>		Parents responsibility to safely dispose of medication school has returned to parent				



### Action Plan for Risk Assessment

Action Plan to be completed based on the findings of risk assessment. The following actions are to be undertaken to reduce the risk level as far as reasonably practical and to ensure that all of the standard controls and local arrangements are in place.

No.	Hazard not fully controlled	Performance Status	Action required	Person Responsible	Target Date	Date of Completion
		Imminent				
		High				
		Medium				
		Low				
Very low						
1.						
2.						
3.						
4.						
5.						
6.						
7.						
8.						

Signature of Responsible Manager..... Date.....





Dream Big, Aim High  
& Make a Difference

## Potley Hill Primary School Parental Consent Form for Use of Emergency Salbutamol Inhalers in School

Department of Health guidelines allow schools to purchase a small quantity of salbutamol inhalers and spacers for emergency use in school. These are **not** intended to replace your child's own medication kept in school, but are available if your child is unable to use their own (for example if it has been mislaid or is empty or broken) and needs it **in an emergency**, that is, if they are having an asthma attack.

The guidance states that the emergency salbutamol inhaler should only be used by children for whom written parental consent for use of the emergency inhaler has been given, who have either been diagnosed with asthma and prescribed an inhaler, or who have been prescribed an inhaler as reliever medication. You would, of course, be alerted if your child required emergency medication, either their own or schools, but the immediate priority would be to stabilise the child's condition, hence written prior consent is needed in this instance. The protocol for the use of the emergency salbutamol inhaler is set out in the school policy 'Supporting Pupils with Medical Needs', which is available on our website. Please note that if your child needed to use a spacer and their own was not available, school has a supply of disposable spacers, so there are no circumstances where children would be sharing spacers.

Please indicate on the form below if you give permission for your child to be given the emergency salbutamol inhaler if necessary. **Your child cannot be given any medication other than that prescribed to them by their doctor without written parental consent and non-return of this form will be taken as no parental consent given.** If you have any queries regarding the use of emergency salbutamol inhalers in school, please contact the office.

Name of adult with parental responsibility and contact no: \_\_\_\_\_

Child's name and Class: \_\_\_\_\_ Date: \_\_\_\_\_

I give permission for my child named below to use the school's emergency salbutamol inhaler in the event of an emergency, if their own inhaler is not available for any reason:

YES  NO

I can confirm my child has been diagnosed with asthma and prescribed an inhaler by their doctor:

YES  NO

I can confirm my child has been prescribed an inhaler as reliever medication by their doctor:

YES  NO

Appendix F

**SPECIMEN LETTER TO INFORM PARENTS OF EMERGENCY SALBUTAMOL  
INHALER USE**

Child's name: .....

Class: .....

Date: .....

Dear.....,

*[Delete as appropriate]*

This letter is to formally notify you that.....has had problems with his / her breathing today. This happened when.....

A member of staff helped them to use their asthma inhaler.

They did not have their own asthma inhaler with them, so a member of staff helped them to use the emergency asthma inhaler containing salbutamol. They were given ..... puffs.

Their own asthma inhaler was not working, so a member of staff helped them to use the emergency asthma inhaler containing salbutamol. They were given ..... puffs. .

Although they soon felt better, we would strongly advise that you have your seen by your own doctor as soon as possible.

Yours sincerely,